

# How to play the Church

Not just for Sundays. Nick Williams, the St Enodoc Pro shows you how to play the Church Hole by Hole



Nick Williams St Enodoc Pro

I am often asked by visitors, “what tips can you give us to play St Enodoc?” My answer is ‘hit it straight’, which evokes a wry smile and a ‘that’s obvious’ look. But the truth is that St Enodoc is all about accuracy, with narrow fairways, small greens, links lies and one of the most natural links courses one can ever play. Combine that with the view and the elements and you have it all.

## Hole 1.

Par 5, 518 yards. Use a driver or 3 wood from the tee. Hitting the fairway is difficult, due to a right to left slope; favour the left half of the fairway, as anywhere right will find heavy rough. The second shot needs to be a fairway wood or a long iron, just left of the marker post, to avoid the big sand dunes, which run all the way along the right side of the fairway towards the green. This leaves a relatively straightforward third shot, onto an elevated upturned bowl shape green.



## Hole 2.

Par 4, 438 yards. This is a very demanding par 4; the line is the left half of the fairway off the tee, leaving a difficult second shot to another elevated green. You must be very aware of the big bunker short of the green, which should be avoided at all times. Handicap players would be better playing this hole as a par 5, playing short with their second shot and leaving a pitch shot onto the green.

## Hole 3.

Par 4, 436 yards. This hole plays much shorter than the second; it's a downhill dogleg left and the tee shot sets up the hole. A long iron, or a fairway wood, off the tee to the right half of the fairway, but long hitters must be aware of the road and out of bounds. Be careful with your tee shot here. The second shot then will be a long to medium iron, and accuracy is again a must in order to hit this green.



## Hole 4.

Par 4, 292 yards. This is a fabulous short par 4, with an intimidating tee shot with out of bounds all around the right side of the hole. Depending on the wind direction, it will either be a long iron or a wood off the tee. Unfortunately the best line is aiming towards the right hand out of bounds, so beware. A good tee shot leaves a simple pitch for a birdie chance. *The brave may drive this green but is it worth the risk?*



## Hole 5.

Par 3, 161 yards. This is a lovely picturesque par 3 over a marsh. Club selection can vary from a wood to a short iron, depending on the wind direction. Try to avoid the left side of the green, as a grass hollow makes it very difficult to get up and down in two.



## Hole 6.

Par 4, 378 yards. The famous Himalayas complex starts on this hole, with a huge sand dune to be negotiated. Hitting this fairway is a must to give any chance of the second shot. A Fairway wood or a long iron off the tee, leaving a precise but blind second shot. Checking your yardage here is important, as the iron selection is crucial. *Some do try to drive over the dune, most never to be seen again.*



## Hole 7.

Par 4, 394 yards. A blind tee shot makes this a very difficult driving hole over the second phase of the Himalayas. A good long tee shot gives just rewards, leaving a straight forward second shot. Beware of the right hand green side pot bunker: it acts like a magnet to any cut second shot to the green.



## Hole 8.

Par 3, 155 yards. This is the shortest of the par 3's at St Enodoc, but has a sting in its tail. Miss this green and seven green side bunkers are ready to grab your ball. Be very aware of the wind direction, as this will affect your club selection dramatically anything from a long iron to a sand wedge.

## Hole 9.

Par 4, 393 yards. This is another hole where you require a strong tee shot and accuracy is a must. The wind plays tricks with you on this hole especially with your second shot because of the huge trees sheltering the back of the green. The flag will look limp but as the ball gets above tree level the wind will take effect. Most people are short on this hole and the right hand green side bunker may come into play.



## Hole 10.

Par 4, 457 yards. This is St. Enodoc's signature hole, stroke index one and one of the hardest par 4's you will ever play. With a water hazard down the left side and sand dunes all the way down the right side of the fairway, it leaves the very long hitter a very small target to aim at; then its a long to medium iron to a dogleg left green, across a water hazard. It is best for the handicap golfer to play this hole as a par 5 using a 3 wood or long iron off the tee, with a medium iron over the middle sand dunes aiming at the church spire and then a relatively simple pitch onto the green. Five is a very good score here.



## Hole 11.

Par 3, 205 yards. This is a very strong par 3. Beware the out of bounds on the left edge of the green, forcing most golfers over to the right hand side, where there are greenside bunkers awaiting you. Positive frame of mind and committing to your club here will give just rewards, otherwise any doubt will be severely punished.

## Hole 12.

Par 4, 386 yards. Another testing hole with heavy rough on the right and left of the fairway, and a Tamarisk hedge coming into play as well. A good long tee shot here sets up a second shot for a medium to short iron to a testing green. Anything not landing in the centre of this green will be thrown off either to the right or the left, due to the upturn bowl shape of the green itself.

## Hole 13.

Par 4, 360 yards. This is not a long par 4, but it is all uphill to a slanting left to right fairway, with a similarly slanting green. Making what seems a very straightforward hole play very difficult, there are more 5's than 4's on this hole. The tee shot favours a draw up the left side of the fairway, leaving a medium iron, *with the ball playing from below your feet to a sloping green*. Enough said. Total concentration is required, and anything hit right on this hole will be severely punished. Beware of the out of bounds on your left with the initial tee shot.

## Hole 14.

Par 4, 355 yards. This is the highest part of the course and the most picturesque, so the wind plays a big part when you play this hole. Always check the wind direction. The fairway slopes dramatically from the left to the right, throwing the ball towards the severe rough on the right hand side. It is a slicer's nightmare. The tee shot should be left of centre, a driver or a 3 wood, leaving a mid iron with the ball below your feet. The green is heavily protected by out of bounds and a steep drop off to the right hand side. Club selection is vital and the left half of this green should be favoured.

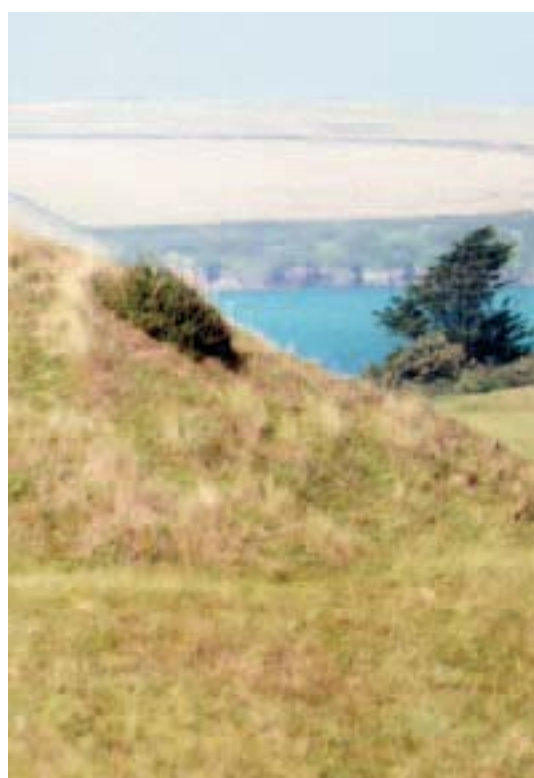
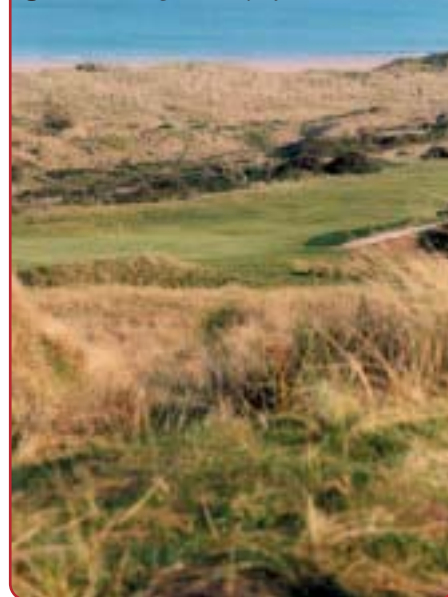
## Hole 15.

Par 3, 168 yards. This is a picturesque par 3. It looks very innocent from the tee but beware of the severe left and right hand pot bunkers, which protect the green. The **Bray Hill**, as it is known, to the right of this hole plays tricks with the wind, making it swirl from many different directions, so the shot can be anything from a wood to a wedge. Double check the wind direction and be positive with your shot.



## Hole 16.

Par 5, 495 yards. This is a lovely hole, running parallel with the estuary. It gives a long hitter one of the few chances for a birdie on this course and the handicap player a very good chance of a par 5. Tee shot is paramount; a driver to the left half of the fairway is the perfect line as the ball tends to break towards the estuary. The second shot, with a fairway wood, will leave you with a relatively simple pitch onto the green, *on a good day of course*.



## Hole 17.

Par 3, 206 yards. This is the longest of the Par 3's at St Enodoc and again the wind plays a big part on how one plays this hole. There is a severe bunker, right and short, which catches anything miss hit. The green itself is a bowl green and one of the few on the course which collects the ball. So favour taking one club more, so that you are through the green, rather than being short in the bunker.



## Hole 18.

Par 4, 446 yards. This is a magnificent finishing par 4, with out of bounds to the right of the hole and heavy rough to the left. Again a long accurate tee shot is required, leaving a wood or a long iron to a raised green, which is well protected right and left by bunkers. Anything over hit, running through the green, leaves a very difficult pitch shot indeed, so club selection again here is vital.

*I know you will enjoy your round at St Enodoc – everyone does.*



15th at dusk



Greenkeepers – (from left to Right), Neil kent, Scott Gibson, Mike Bosky, Stuart Dymond, Steve Urell, Will Green



Stuart Dymond , Head Greenkeeper



A Cross Country look at the 9th green